

Character Analysis and Description



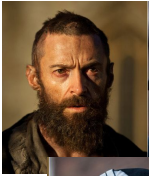
A NOTE ON YOUR WRITTEN EXAMS

- Written exams are OPEN BOOK (unless otherwise notified)
- You are allowed ONE HAND-WRITTEN cheat sheet (front & back)
 - Annotations:
 - Quotes, important expositions and plot developments, character notes, definition of terms
- This exam will be typed in Short Answer & Essay format on Moodle, and may contain Multiple Choice and Matching as well.
 - Short Answers are 1 paragraph in length
 - Essays are 3-5 paragraphs in length
 - All written responses must contain a THESIS
- This exam is timed

BASICS OF CHARACTER ANALYSIS

- Character analysis =
 - Clues from the story to learn more about characters
 - Aids in understanding the story and its meanings
 - Makes stories more real and personal
- How we learn about characters:
 - : The author tells you exactly what he/she wants you to know about the character.
 - : The author lets the characters reveal their personalities through what they think, say or do.



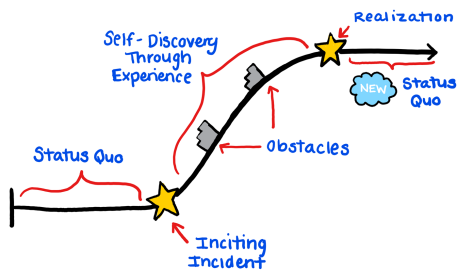


THINGS TO KNOW ABOUT CHARACTERS

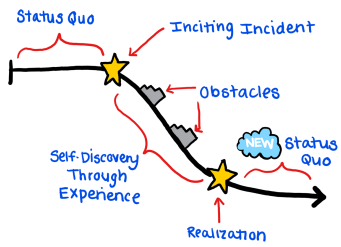


-
-
- Environment
- Traumatic Experiences
- Poor/Good Choices (Past)
-
- Poor/Good Choices (Present - carried through the Plot)
- Words or Phrases the Character uses to describe their feelings of events and actions
-
- How does this Character interact with other characters in the text?
- — Journey the Character takes through encountering explicit conflict and dealing with implicit conflict

CHARACTER ARCS



CHARACTER ARCS



THE 12 CHARACTER ARCHETYPES

THE WARRIOR



STRENGTHS:

- Physical and/or mental prowess
- Confident
- Collected
- Ready for anything

WEAKNESSES:

- Egotistical
- Underestimates opponents
- Can be overconfident

MOTIVATION:

Someone has to save the day. Why not me?

THE CHILD



STRENGTHS:

- Imaginative
- Trusting
- Hopeful

WEAKNESSES:

- Weak in physicality or power
- Naive to the world
- Easily taken advantage of

MOTIVATION:

To learn, obtain happiness, and to find truth

THE ORPHAN



STRENGTHS:

- They command respect
- They're survivors
- They have empathy for the commoners

WEAKNESSES:

- They're driven by what others think of them
- No self-confidence
- Too eager to please

MOTIVATION:

To be understood, accepted & connect with people

CHARACTER ARCHETYPES

THE CREATOR



STRENGTHS:

- Inexhaustible drive
- Creative genius
- Vision

WEAKNESSES:

- Inability to communicate a vision
- Alienating perfectionism
- Work above everyone else

MOTIVATION:

The lasting impression of whatever they build. Legacy above all else.

THE CAREGIVER



STRENGTHS:

- Big heart
- Selfless acts
- Generous

WEAKNESSES:

- Easily deceived
- One track mind
- Value other's survival over their own

MOTIVATION:

Protect those they love at all costs. They live to serve.

THE MENTOR



STRENGTHS:

- Wisdom about the world
- Calming presence
- Great listener

WEAKNESSES:

- Inability to solve their own problems
- Predictions can go wrong
- Learned from dark mistakes

MOTIVATION:

To teach the next generation to pick up the gauntlet.

CHARACTER ARCHETYPES

THE JOKER



STRENGTHS:

- Everyone likes them
- They're fun to be around
- Can have a deep soul

WEAKNESSES:

- Unreliable in times of need
- Usually in it for themselves
- A constant distraction

MOTIVATION:

What will make my life easier and what will make me happy?

THE MAGICIAN



STRENGTHS:

- Knowledge
- Strategy
- Historical understanding

WEAKNESSES:

- Hubris
- Anger if they don't get their way
- Sometimes wily-like

MOTIVATION:

Power and organization. They see chaos in the world and know how to solve the puzzle.

THE RULER



STRENGTHS:

- Power
- Communication
- Leadership skills

WEAKNESSES:

- Control at all costs
- Paranoia at plots against them

MOTIVATION:

Keep the peace & order in society by maintaining their power and getting more power.

CHARACTER ARCHETYPES

THE REBEL



STRENGTHS:

- Never give up
- Can inspire the masses
- Know how to get a lot out of a little

WEAKNESSES:

- Frequently low on the totem pole
- Has to earn what they get the hard way
- They have no power and no clear way forward

MOTIVATION:

The world sucks, so let's change it.

THE LOVER



STRENGTHS:

- Devoted to another
- Passionate about the object of their affection
- Open with their feelings

WEAKNESSES:

- Willing to die for another
- Can lose their own personality while pleasing another

MOTIVATION:

To give everything they've got to another person. To make relationships strong.

THE SEDUCER



STRENGTHS:

- Charismatic
- Bewily
- Smooth talker

WEAKNESSES:

- No morals
- Controlling
- No loyalty

MOTIVATION:

To run the show. They want power and control at all costs.

CHARACTER ANALYSIS & DESCRIPTION

- Physical Characteristics
- History
- Behavior
- Relationships
- Character Arc
- Thesis?

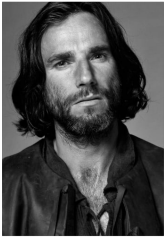


CHARACTER ANALYSIS & DESCRIPTION

- Physical Characteristics
- History
- Behavior
- Relationships
- Character Arc
- Thesis?



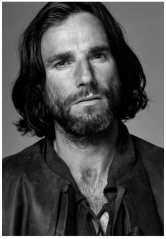
NOW YOU TRY IT!



- What character archetypes apply to John Proctor?
- What character archetypes apply to Abigail Williams?
- What are Abigail's motives?
- What are John Proctor's motives?
- What about these characters' pasts complicates their stories?
- What challenges do these characters encounter that they must overcome to achieve their objectives?
- Are they better or worse because of this journey?



NOW YOU TRY IT!



- A character that represents the consequences that come from possessing one or more personal flaws or being doomed by a particular fate.
- Literary device used to evoke pity and/or fear in an audience through the protagonist's flaw and consequential downfall.
- Good, but not absolutely virtuous
- "For our pity is excited by misfortunes undeservedly suffered, and our terror by some resemblance between the sufferer and ourselves."
- Is John Proctor a TRAGIC HERO?



WRITING THE ESSAY

- Paragraph 1 (Intro)
 - Hook
 - Quick summary of Character's arc
 - Thesis:
 - Three character traits that impacted the story, and what is significant about this character?

WRITING THE ESSAY

➤ Paragraphs 2-4 (Body)

- State the Character Trait (brave? seductress?)
- Describe examples/events that demonstrate that trait
- Provide a quote that provides evidence about the Character's thoughts or actions to help demonstrate that trait
- 2-3 sentences of commentary and exposition about this trait — what's the impact on the story development, or how does it relate to things outside the text?

WRITING THE ESSAY

➤ Paragraphs 5 (conclusion)

- Make a final statement about the Character
- Restate the three traits
- Final Commentary:
 - What did this essay prove?
 - What is the link to things outside the text or modern application to society?
