





Tips for Acting

- ✦
- ✦ Manage Your Time on Set
- ✦ Do Your Homework (state of mind for the next scene) —
- ✦
- ✦
- ✦ Take Direction



Body

- ✦ The shape of your body allows to relate to the character better. It also you (the actor) to break out of your patterns and create and find new ones for each character
- ✦ How they walk
- ✦ Where they lead from



Walking

- ✦ Tempo: fast, medium, slow
- ✦ Extreme tempos: super speed & slow mo
- ✦ Tempos can change with the intent of the character but establishing a base line tempo is important for relating to the character.



Walking

- ✦ While walking you must think about the levels
- ✦ Levels: high, medium, low
- ✦ Examples: an old man would walk at a lower level while the President (someone is power) would walk at a higher level



Where do you lead from?

- ✦ Your center or your character's center of gravity it where you lead from.
- ✦ *Leading from* meaning what goes forward when you walk.
- ✦ Changing the center or what you lead from can change the energy you give off

Leading examples

- ✦ Top of the Head-suggests you don't want to be seen.
- ✦ Chin-powerful, secure in ones self, confident
- ✦ Shoulder-similar to top of the head, wants to blend in and not be seen.
- ✦ Chest-powerful, confident



Leading examples

- ✦ Lower body suggests laid back, lazy, aloof these are most likely to appear in leading areas such as...
- ✦ Hips
- ✦ Knees
- ✦ Feet
- ✦ Hands - suggest more free spirited



Voice



- ✦ The voice of the character is very important to the building of the character; this doesn't always mean changing the accent (while it some cases is very useful!)
- ✦ One simple change is head voice vs. chest voice and where it resonates.

Head voice

- ❖ Appears in singing but is also useful while talking
- ❖ Head voice is when the voice resonates with in the head
- ❖ Commonly in the upper area of the head or the nose
- ❖ This is usually higher pitched



Chest voice

- ❖ Resonates in the chest
- ❖ Usually a deeper sounding voice



Voices

- ❖ Oh, I saw the whole thing, dude! First, you were like, whoa! And then we were like, WHOA! And then you were like, whoa.
- ❖ You've got some serious thrill issues, dude... awesome!
- ❖ Whoa, dude! Mister Turtle is my father. The name's Crush.
- ❖ It's awesome, Jellyman. Little dudes are just eggs, we leave 'em on the beach to hatch, and then — koo-koo ka-choo! — they find their way back to the Big Ol' Blue.



Voices

- ✦ Calvin: Hello. Stephen, my boy!
- ✦ Stephen: Yeah, yeah, yeah. Hello, my butt. Who dis on dat nag?
- ✦ Calvin: Aw, Stephen, you have nails for breakfast? What's the matter? Why you so ornery? You miss me, Huh?
- ✦ Stephen: Oh, yes, sir. I miss you like a hawg miss slop. Like a baby miss mammy. I miss you like I misses a rock in my shoe! Now, I aks you, who dis on dat nag?



Voices

- ✦ Calvin: Man, the lip on him! Who! He's gettin worse and worse. Now, WHERE IS MY BEAUTIFUL SISTER?



Importance of backstories

- ✦ Your character was not born just before this scene and does not die when they leave the scene. Think about that.
- ✦ Think about what your character just came from doing and what they are going to do after this scene.
- ✦ Also think about your character's backstory (education, jobs, friends, family, etc.)



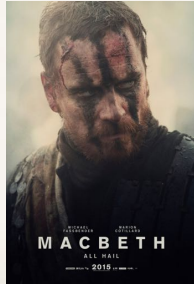
Connection



- ✦ Connection with the audience and with your scene partner is **EXTREMELY** important.
- ✦ With your scene partner involves listening and reacting even though you know what is going to happen it needs to appear as if everything is happening for the first time.
- ✦ Connection with the audience allows the audience to feel as if they are experiencing everything you are.

Monologue/Soliloquy Delivery

- ✦ Performing as your character that you have chosen/created, perform a 1-2 minute monologue that tells a story from their point of view
- ✦ Include body movement that matches your character
- ✦ Speak in your character's voice
- ✦ Includes elements of your character's backstory
- ✦ Memorized



Scene Recreation

- ✦ **Mise-En-Scene Recreation**
- ✦ Choose one scene from a film, TV show, or play
- ✦ Have a director who stages the scene and a crew to shoot it
- ✦ Cast the scene with characters
- ✦ Memorize your lines!
- ✦ [Click here to see some previous examples!](#)